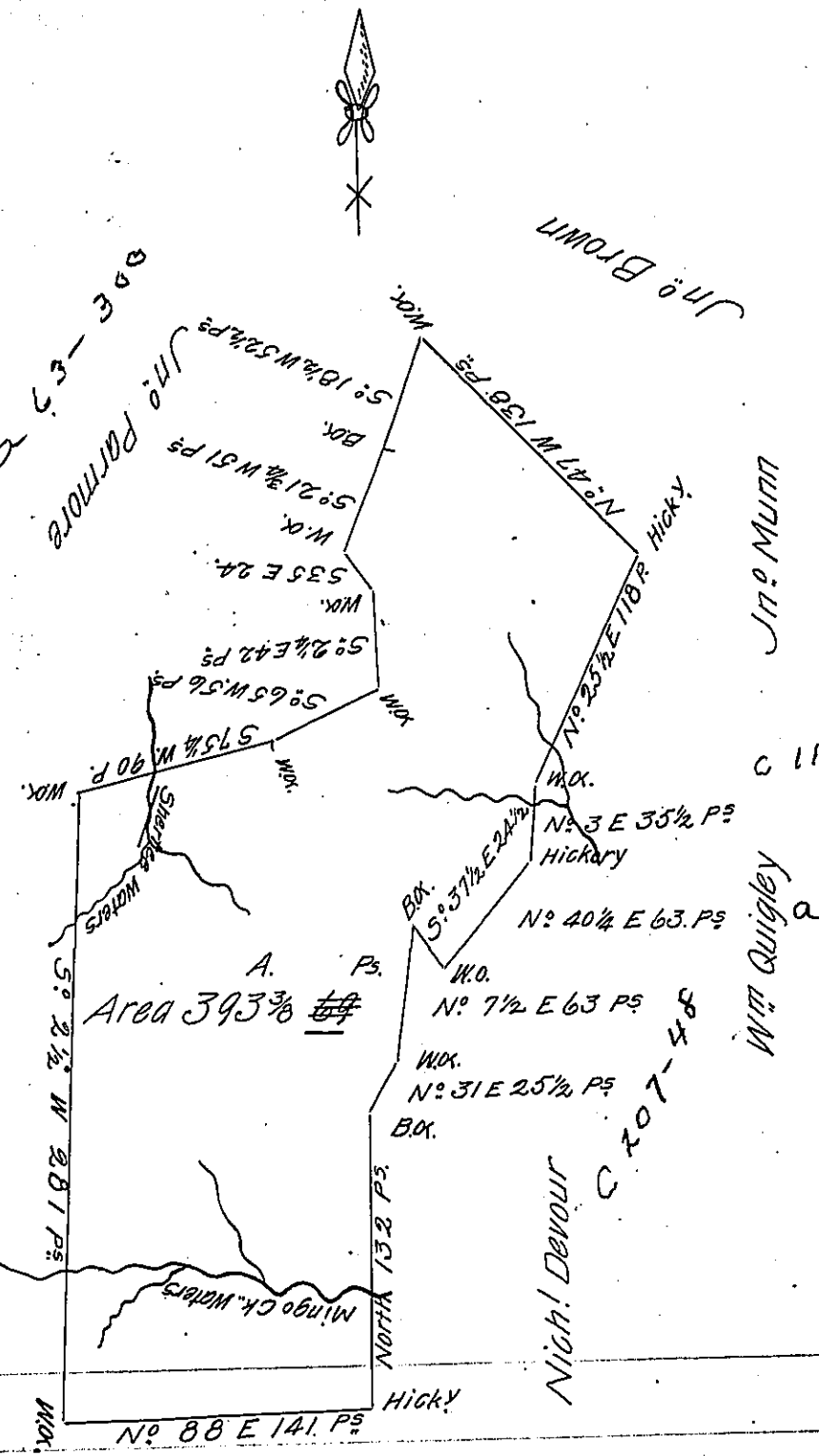


282-6920  
Thomas Farmore



Henry Devour

A Draught of a Survey lying on the Waters of Chartiers and Mingo Creeks  
 (in Washington County Nottingham Township) containing 393 Ac.<sup>s</sup> 69<sup>Ps</sup> execu-  
 ted 24<sup>th</sup> Jan<sup>y</sup>. 1786 in pursuance of a Certificate obtained under the Gov-  
 ernment of Virg<sup>a</sup>. in the Name of W<sup>m</sup>. Kinney, which Certificate is not in  
 the List transmitted to Nevill & Ritchie from the Surveyor General's Office, but  
 is in the List Sent to Mess<sup>rs</sup> Reddick and Hoge as appears from a Certificate  
 from Mr Hoge.

Presley Nevill  
 Dep. Sur<sup>r</sup>

IN TESTIMONY that the above is a copy of the original remaining on file in  
 the Department of Internal Affairs of Pennsylvania, made  
 conformably to an Act of Assembly approved the 16th day of  
 February, 1833, I have hereunto set my Hand and caused  
 the Seal of said Department to be affixed at Harrisburg,  
 this fifteenth day of May 1905.

*Geo. P. Hanson*  
 Secretary of Internal Affairs.